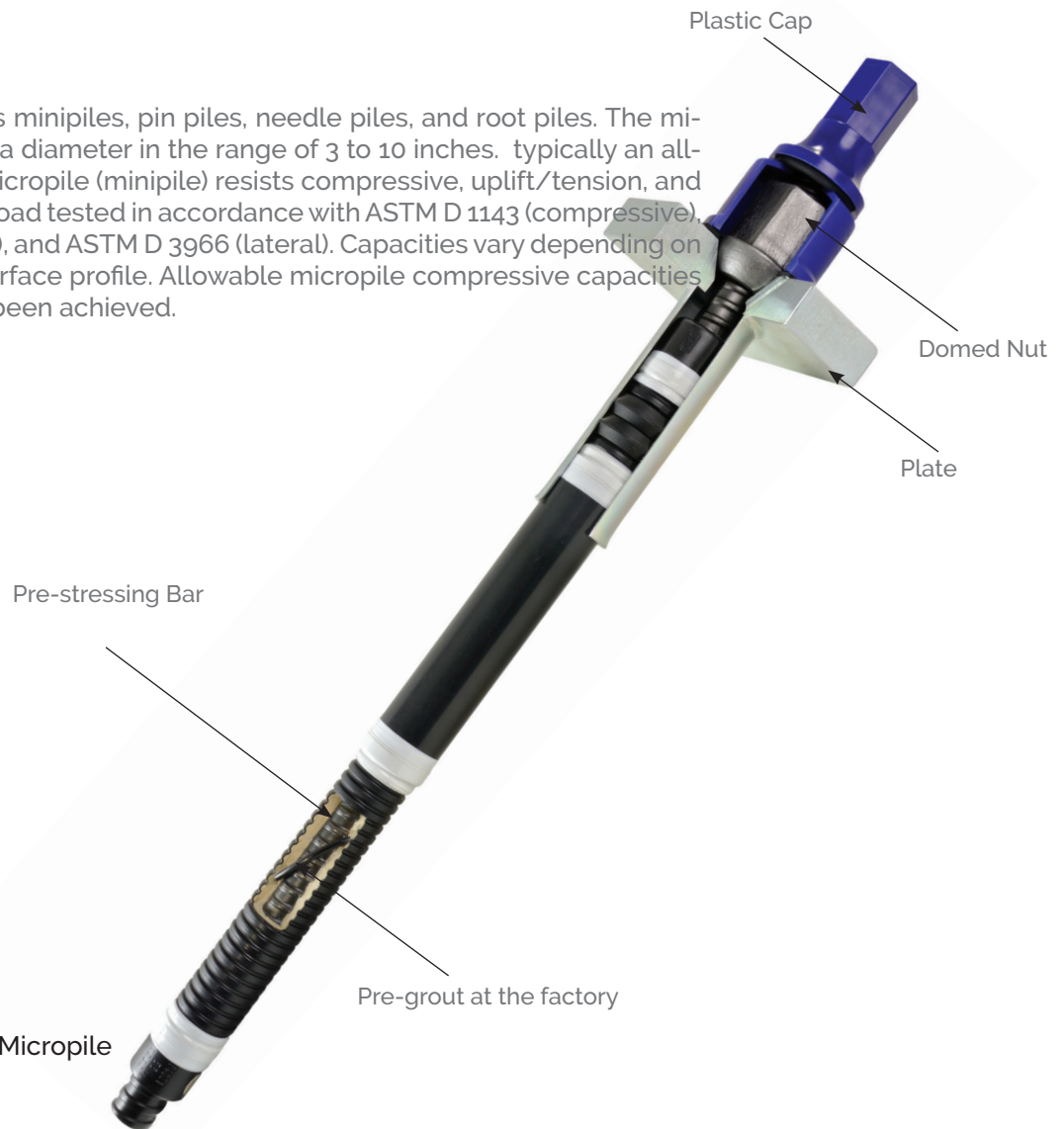


Micro-Piles

Micropiles are also known as minipiles, pin piles, needle piles, and root piles. The micropile casing generally has a diameter in the range of 3 to 10 inches. typically an all-thread bar, is. The finished micropile (minipile) resists compressive, uplift/tension, and lateral loads and is typically load tested in accordance with ASTM D 1143 (compressive), ASTM D 3689 (uplift/tension), and ASTM D 3966 (lateral). Capacities vary depending on the micropile size and subsurface profile. Allowable micropile compressive capacities of more than 500 tons have been achieved.



Service Life

- Temporarily application : 2 Years
- Self drilling Permanent MicroPiles : 50 Years
- Solid Bar Permanent Micropile : Up to 100 Year for Double corrosion protection bars,



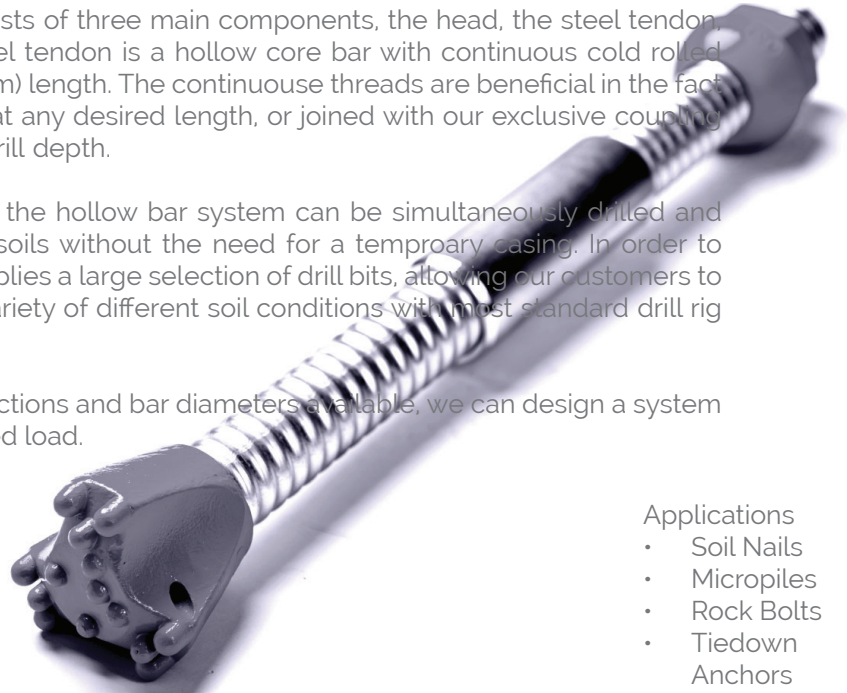
100 Years
Service Life

Self Drilling Hollow Bars

The hollow core bar system consists of three main components, the head, the steel tendon, and a single use drill bit. The steel tendon is a hollow core bar with continuous cold rolled threads throughout the bars 3) '10m) length. The continuous threads are beneficial in the fact that they allow the bar to be cut at any desired length, or joined with our exclusive coupling system to achieve your desired drill depth.

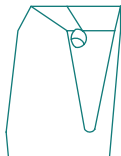
Designed to increase production, the hollow bar system can be simultaneously drilled and grouted into loose or collapsing soils without the need for a temporary casing. In order to insure smooth installation, we supplies a large selection of drill bits, allowing our customers to install the hollow core bars in a variety of different soil conditions with most standard drill rig configurations.

Due to the wide range of cross-sections and bar diameters available, we can design a system for you to carry almost any required load.

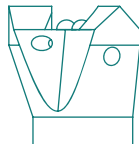


Applications

- Soil Nails
- Micropiles
- Rock Bolts
- Tiedown Anchors
- Tieback Anchors



Arc Shaped Drill Bit AC



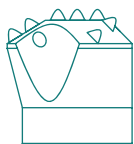
Hardened cross drill bit EY-DC



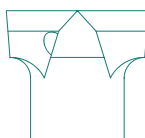
Hardened Button bit ES



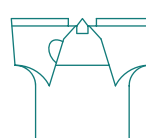
Hardened Button with Drop Center ES-DC



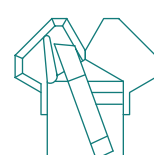
Button bit with TC insert ESS



Cross Bit EX



Cross Bit with TC insert EXX



Clay Bit EW

50 Years
Service Life